

# Terra Nova

Size: 46" x 54"



COSMO ● ● ● ●  
● ● ● ● POLITANS  
A division of RJR Fabrics

Sleek & Silky

# Terra Nova

**FINISHED QUILT: 46" × 54"**

**FINISHED BLOCK SIZE: 13" × 13"**

## Materials

FABRIC	AMOUNT	USAGE
Sleek & Silky: 1001-10 Gold, 6 Bordeaux, 5 Burgundy, 4 Chocolate, 3 Bronze, 9 Rust, 2 Taupe, 7 Ruby	$\frac{1}{3}$ yard each	Leaves
Sleek & Silky: 1001-1 Ivory	3 yards	Background
Sleek & Silky: 1001-5 Burgundy	2 yards	Border and binding
Sleek & Silky: 1001-3 Bronze	$3\frac{1}{4}$ yards	Backing
Batting	50" × 58"	

## Cutting

**LEAVES** Cut 80 squares 5" × 5" from leaf fabrics.

**BACKGROUND** Cut 48 squares 5" × 5".

Cut 4 squares 14" × 14", then cut diagonally twice into 16 side triangles (you will only need 14).

Cut 2 squares  $7\frac{1}{4}$ " ×  $7\frac{1}{4}$ ", then cut each square diagonally once into 2 corner triangles.

**BORDER** Cut 4 strips 6" wide lengthwise.

**BINDING** Cut strips  $3\frac{1}{4}$ " wide lengthwise to total 212" after piecing the strips end to end (refer to pages 72–74).

## Construction

1. Sew 4 squares together into blocks. Make 20 bright leaf blocks and 12 background blocks.
2. Arrange the blocks as shown in the construction diagram and the quilt photo.

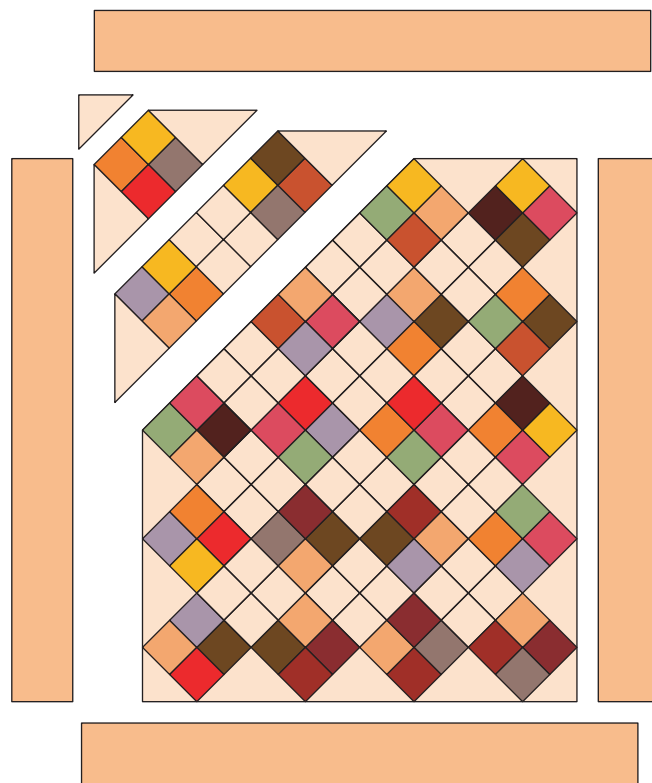
3. Sew the blocks together into rows, adding side and corner triangles.
4. Press the seam allowances of each row in alternate directions to make matching the seams easier. Sew the rows together. Press.
5. Start from a corner of the quilt and gather the fabric to the center to make 3 or 4 pleats. Stitch to hold the pleats together, either by hand or with a machine (beginning and ending with a tacking stitch).



6. Move to an adjacent block and repeat Step 5 in the opposite direction. Repeat for the remaining blocks.



7. Straighten the borders by creating even pleats on the border triangles. Stitch the pleats in place.
8. Measure the quilt top to trim side borders to correct length. Attach side borders, pressing toward the border.
9. Repeat step 8 for top and bottom borders.
10. Layer, baste, quilt as desired, and bind. To maintain loft in the pleated quilt top, quilt by stitching a “+” shape at all major intersections using invisible thread.



Quilt Construction



COSMOPOLITANS  
A division of RJR Fabrics

Sleek & Silky



1001-1 Ivory



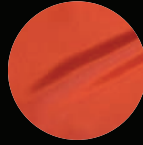
1001-2 Taupe



1001-3 Bronze



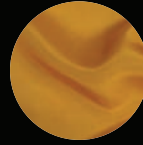
1001-4  
Chocolate



1001-9 Rust



1001-8  
Tangerine



1001-10 Gold



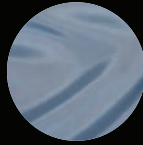
1001-7 Ruby



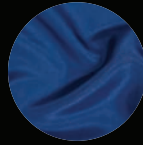
1001-6  
Bordeaux



1001-5  
Burgundy



1001-14 Denim



1001-15  
Sapphire



1001-16 Navy  
Stone



1001-17  
Amethyst



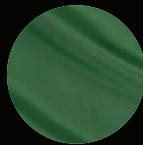
1001-18  
Magenta



1001-19 Plum



1001-11 Sage



1001-12  
Emerald



1001-13 Forest



1001-20 Onyx



1001-21  
Prepared For  
Dyeing



A Division of RJR Fabrics  
[www.rjrcosmopolitans.com](http://www.rjrcosmopolitans.com)



[www.ctpub.com](http://www.ctpub.com)