

Times Square

Size: 93½" x 93½"



COSMO ● ● ● ●
● ● ● ● POLITANS
A division of RJR Fabrics

Sleek & Silky

Times Square

QUILT SIZE: 93½" × 93½"

BLOCK SIZE: 14" × 14"

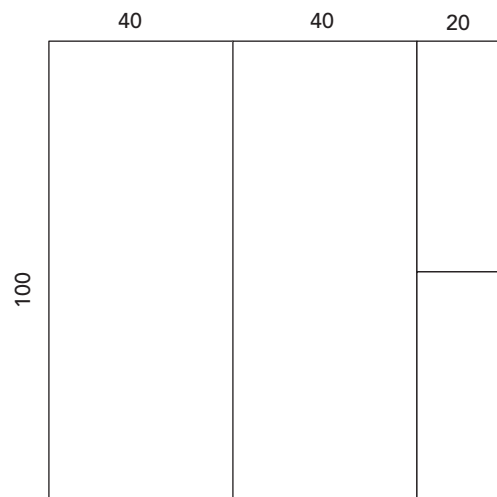
Cutting instructions:

Following the Cutting Chart, cut the listed number of strips from the fabrics.

BLACK (20): Cut 4 lengthwise strips 7½" × 101" for the border.

Cut 4 lengthwise strips 1¾" × 101" for the binding.

BACKING: Piece the back according to the diagram:



Yardage and Cutting Chart

FABRIC Sleek & Silky	YARDAGE	1½" STRIPS	1¾" STRIPS	2½" STRIPS	3½" STRIPS
1001-1 Ivory	5/8	2	-	2	2
1001-3 Bronze	5/8	-	4	2	-
1001-5 Burgundy	1/3	2	-	2	-
1001-6 Bordeaux	2/3	-	4	2	2
1001-7 Ruby	3/4	2	2	4	2
1001-8 Tangerine	2/3	4	2	4	-
1001-9 Rust	3/8	-	-	4	-
1001-10 Gold	1 1/8	8	2	8	-
1001-11 Sage	1 1/8	2	2	6	4
1001-12 Emerald	2/3	-	-	2	4
1001-14 Denim	1 1/8	-	6	4	4
1001-15 Sapphire	1/3	2	2	-	-
1001-16 Navy Stone	3/4	2	4	4	-
1001-17 Amethyst	7/8	4	2	4	2
1001-18 Magenta	5/8	4	2	2	-
1001-20 (incl. binding)* Onyx	2 7/8	-	-	-	-
Backing* 1001-20 Onyx	7	-	-	-	-

* See cutting instructions above

Piecing instructions

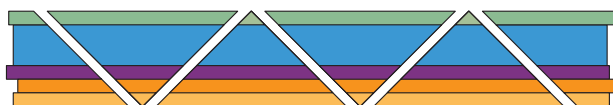
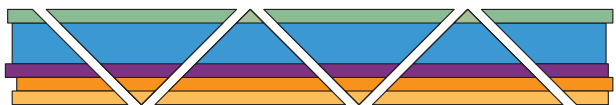
Group the fabrics by block, following the Blocks Chart.

Blocks Chart

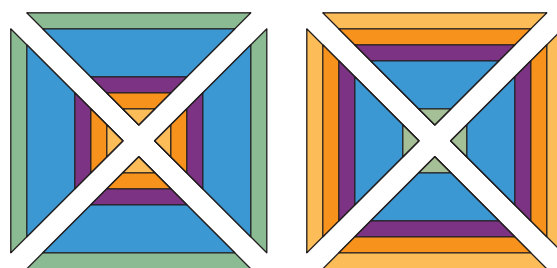
BLOCKS	1½" STRIPS	1¾" STRIPS	2½" STRIPS	3½" STRIPS
1 a, b	1001-8, 10, 17	1001-11		1001-14
2 a, b		1001-15	1001-5, 14, 11	
3 a, b	1001-1	1001-3	1001-11	1001-17
4 a, b	1001-5, 10, 11	1001-14		1001-7
5 a, b		1001-6	1001-3, 10, 17	
6 a, b	1001-16	1001-3	1001-12	1001-14
7 a, b	1001-10	1001-18	1001-7	1001-1
8 a, b		1001-14	1001-7, 8, 17	
9 a, b	1001-8	1001-16	1001-18	1001-12
10 a, b	1001-18	1001-17	1001-10	1001-6
11 a, b		1001-10	1001-9, 8, 16	
12 a, b	1001-15	1001-7	1001-10	1001-11
13 a, b, b, b, b		1001-14	1001-6, 10, 11	
14 a, a, b, b	1001-7, 17, 18	1001-6		1001-11
15 a, a, b, b		1001-16	1001-1, 9, 14	
16 a, a, b, b	1001-10	1001-8	1001-16	1001-12

1. Each block is made using two identical strip sets. Sew the strips together following the block diagrams on page 4 for the order of the strips within the blocks. Press the seams in one direction.

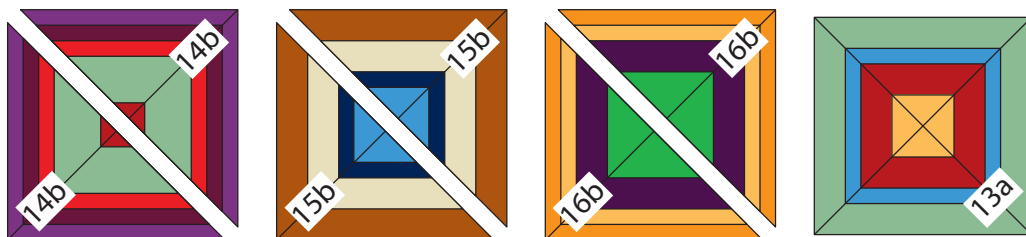
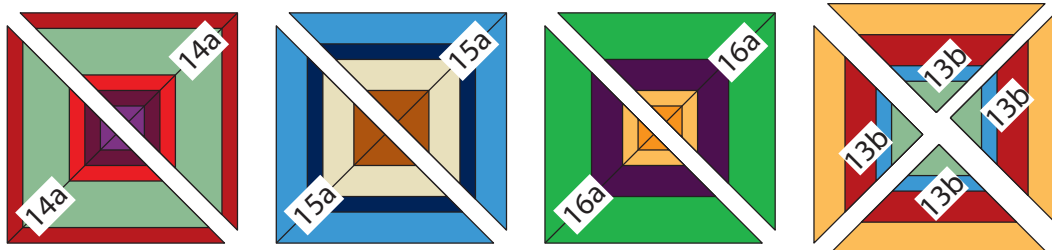
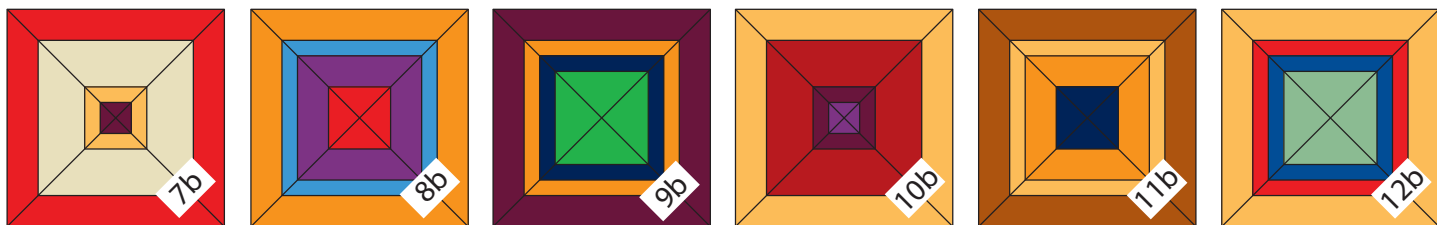
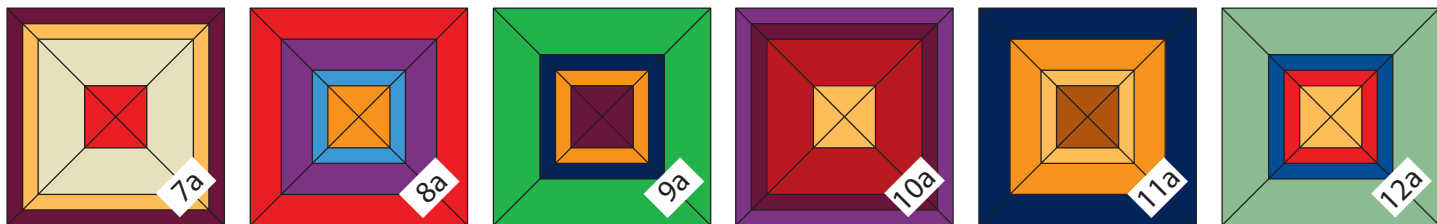
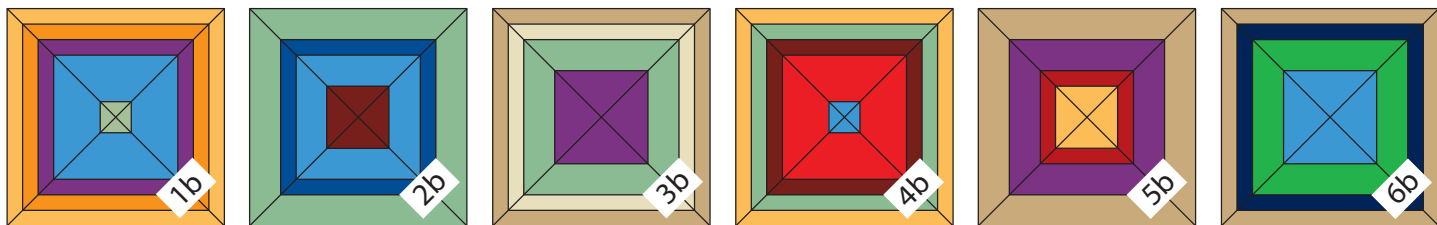
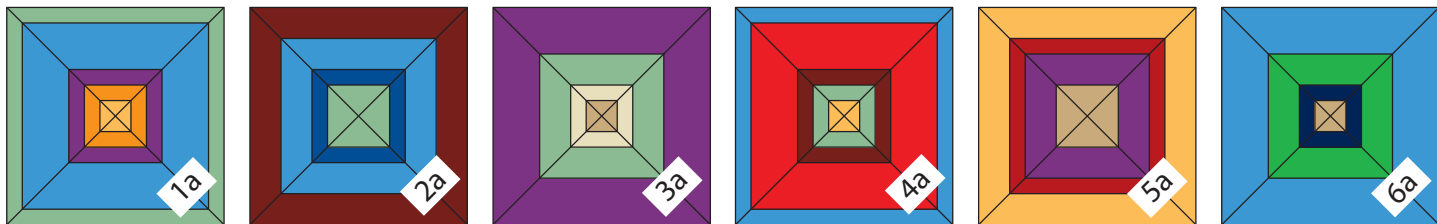
2. Using the 45° line on your ruler, cut the strip sets into 4 triangles measuring 15½" on the long side.



3. Group the pieced triangles into blocks. Sew the triangles together in pairs and press the seams in the same direction. Sew the pairs together into blocks. Press.



4. Repeat with all blocks and setting triangles. Note: The blocks use 4 pieced triangles, the setting triangles use 2 pieced triangles. Block 13a is a full block and the 13b pieces are the 4 corner triangles.



Quilt Construction:

1. Lay the blocks out in the order shown in the quilt diagram.
2. Sew the blocks together in diagonal rows, alternating the pressing direction in each row so seams will nest.
3. Sew the rows together to complete center. Press.
4. Using a pin to identify the center of each border strip and each side of the quilt, Sew on the 4 border strips, stopping and starting $\frac{1}{2}$ " from the edge of the quilt top. Miter the 4 corners.
5. Layer, baste, and quilt as desired.



COSMOPOLITANS
A division of RJR Fabrics

Sleek & Silky



1001-1 Ivory



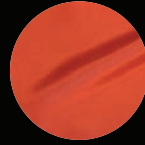
1001-2 Taupe



1001-3 Bronze



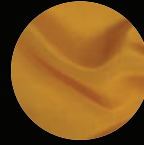
1001-4
Chocolate



1001-9 Rust



1001-8
Tangerine



1001-10 Gold



1001-7 Ruby



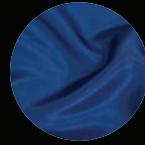
1001-6
Bordeaux



1001-5
Burgundy



1001-14 Denim



1001-15
Sapphire



1001-16 Navy
Stone



1001-17
Amethyst



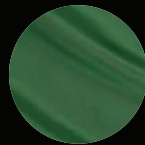
1001-18
Magenta



1001-19 Plum



1001-11 Sage



1001-12
Emerald



1001-13 Forest



1001-20 Onyx



1001-21
Prepared For
Dyeing



A Division of RJR Fabrics
www.rjrcosmopolitans.com



www.ctpub.com